

ZX135 SPECIFICATIONS

ENGINE

Model	Isuzu AM-4JJ1X
Type	4-cycle water-cooled, common rail direct injection
Aspiration	Variable geometry turbocharged, intercooled, cooled EGR
After treatment	Muffler filter
No. of cylinders	4
Rated power	
ISO 14396	77.0 kW at 2 000 min ⁻¹
ISO 9249, net	73.4 kW at 2 000 min ⁻¹
EEC 80/1269, net	73.4 kW at 2 000 min ⁻¹
SAE J1349, net	73.4 kW at 2 000 min ⁻¹
Maximum torque	374 Nm at 1 600 min ⁻¹
Piston displacement	2.999 L
Bore and stroke	95.4 mm x 104.9 mm
Batteries	2 x 12 V / 58 Ah

HYDRAULIC SYSTEM

Hydraulic Pumps

Main pumps	2 variable displacement axial piston pumps
Maximum oil flow	2 x 117 L/min
Pilot pump	1 gear pump
Maximum oil flow	33.6 L/min

Hydraulic Motors

Travel	2 variable displacement axial piston motors
Swing	1 axial piston motor

Relief Valve Settings

Implement circuit	34.3 MPa
Swing circuit	32.3 MPa
Travel circuit	34.3 MPa
Pilot circuit	4.00 MPa
Power boost	36.3 MPa

Hydraulic Cylinders

	Quantity	Bore	Rod diameter
Boom	2	105 mm	70 mm
Arm	1	115 mm	80 mm
Bucket	1	100 mm	70 mm

UPPERSTRUCTURE

Revolving Frame

D-section frame for resistance to deformation.

Swing Device

Axial piston motor with planetary reduction gear is bathed in oil. Swing circle is single-row. Swing parking brake is spring-set/hydraulic-released disc type.

Swing speed	13.3 min ⁻¹
Swing torque	34 kNm

Operator's Cab

Independent spacious cab, 1 005 mm wide by 1 675 mm high, conforming to ISO* Standards.

* International Organization for Standardization

UNDERCARRIAGE

Tracks

Heat-treated connecting pins with dirt seals. Hydraulic (grease) track adjusters with shock-absorbing recoil springs.

Numbers of Rollers and Shoes on Each Side

Upper rollers	1
Lower rollers	7
Track shoes	44
Track guard	1

Travel Device

Each track driven by 2-speed axial piston motor. Parking brake is spring-set/hydraulic-released disc type. Automatic transmission system: High-Low.

Travel speeds	High : 0 to 5.5 km/h
	Low : 0 to 3.3 km/h

Maximum traction force ... 117 kN

Gradeability

70% (35 degree) continuous

SOUND LEVEL

Sound level in cab according to ISO 6396 LpA 69 dB(A)
 External sound level according to ISO 6395 and
 EU Directive 2000/14/EC LwA 98 dB(A)

SERVICE REFILL CAPACITIES

Fuel tank	280 L
Engine coolant	20.0 L
Engine oil	17.0 L
Swing device	3.20 L
Travel device (each side)	4.00 L
Hydraulic system	170 L
Hydraulic oil tank	70.0 L

BUCKET AND ARM DIGGING FORCE

Arm length	ZAXIS 130		
	2.10 m	2.52 m	3.01 m
Bucket digging force* ISO	104 kN		
Bucket digging force* SAE	91 kN		
Arm crowd force* ISO	77 kN	69 kN	61 kN
Arm crowd force* SAE	74 kN	67 kN	60 kN

* At power boost

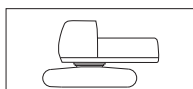
WEIGHTS AND GROUND PRESSURE

Operating Weight and Ground Pressure

Shoe type	Shoe width	Arm length	ZAXIS 130		ZAXIS 130 with blade (optional)	
			kg	kPa	kg	kPa
Triple grouser	500 mm	2.10 m	12 800	40	13 900	43
		2.52 m	12 800	40	14 000	44
		3.01 m	12 900	40	14 000	44
	600 mm	2.10 m	13 100	34	–	–
		2.52 m	13 100	34	–	–
		3.01 m	13 200	34	–	–
	700 mm	2.10 m	13 200	29	–	–
		2.52 m	13 300	29	–	–
		3.01 m	13 400	30	–	–
Pad crawler	500 mm	2.10 m	12 900	40	14 000	43
		2.52 m	12 900	40	14 100	44
		3.01 m	13 000	40	14 100	44
Rubber pad	500 mm	2.10 m	13 300	41	14 400	45
		2.52 m	13 300	41	14 500	45
		3.01 m	13 400	41	14 500	45

Including 0.50 m³ (ISO heaped), bucket weight (410 kg) and counterweight (3 000 kg).

Basic Machine Weight and Overall Width



Excluding front end attachment, fuel, hydraulic oil and coolant etc. Including counterweight.

Shoe type	Shoe width	ZAXIS 130		ZAXIS 130 with blade (optional)	
		Weight	Overall width	Weight	Overall width
Triple grouser	500 mm	10 100 kg	2 490 mm	11 380 kg	2 490 mm
	600 mm	10 400 kg	2 590 mm	–	–
	700 mm	10 600 kg	2 690 mm	–	–
Pad crawler	500 mm	10 200 kg	2 490 mm	11 400 kg	2 490 mm
Rubber pad	500 mm	10 600 kg	2 490 mm	11 800 kg	2 490 mm

Components Weight

	Weight
Counterweight	3 000 kg
Boom 4.60 m (with arm cylinder and boom cylinder)	1 220 kg
Arm 2.10 m (with bucket cylinder)	550 kg
Arm 2.52 m (with bucket cylinder)	600 kg
Arm 3.01 m (with bucket cylinder)	670 kg
Bucket 0.50 m ³	410 kg

BACKHOE ATTACHMENTS

Boom and arms are of welded, box-section design. 4.60 m boom, and 2.10 m, 2.52 m and 3.01 m arms are available. Bucket is of welded steel structure. Side clearance adjust mechanism provided on the bucket joint bracket.

Buckets

Capacity	Width		No. Of teeth	Weight	Recommendation		
					ZAXIS 130		
	Without side cutters	With side cutters			Arm 2.10 m	Arm 2.52 m	Arm 3.01 m
0.45 m ³	800 mm	920 mm	5	390 kg	⊙	⊙	○
0.50 m ³	890 mm	1 010 mm	5	410 kg	⊙	⊙	○*
0.59 m ³	950 mm	1 070 mm	5	430 kg	⊙	○	–

* With 700 mm shoes only

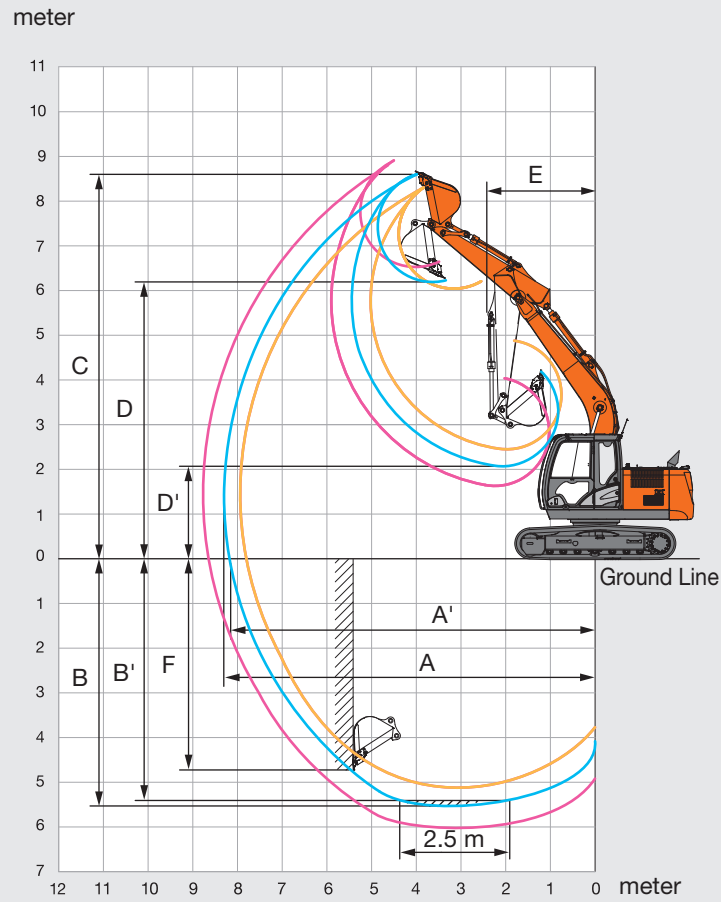
⊙ Suitable for materials with density of 2 000 kg/m³ or less

○ Suitable for materials with density of 1 600 kg/m³ or less

– Not applicable

SPECIFICATIONS

WORKING RANGES

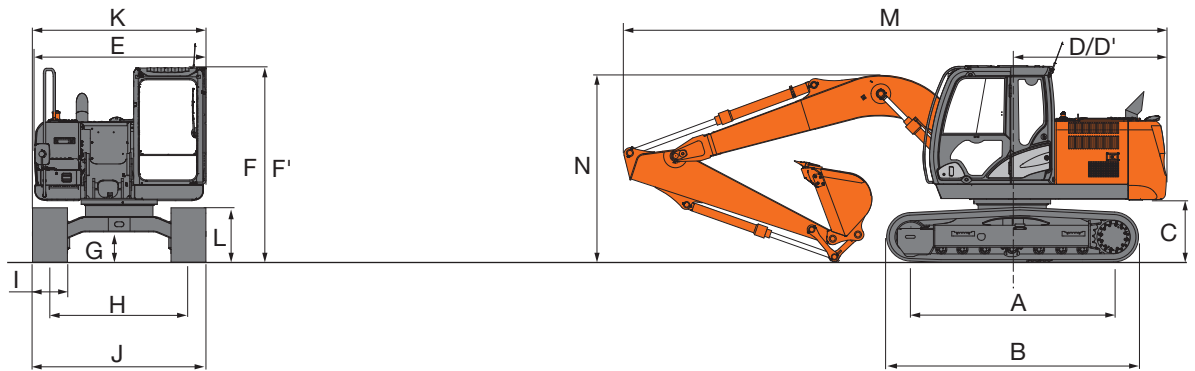


Unit: mm

Arm length	ZAXIS 130		
	2.10 m	2.52 m	3.01 m
A Max. digging reach	7 940	8 300	8 770
A' Max. digging reach (on ground)	7 800	8 170	8 650
B Max. digging depth	5 120	5 540	6 030
B' Max. digging depth (2.5 m level)	4 870	5 310	5 840
C Max. cutting height	8 400	8 600	8 930
D Max. dumping height	5 990	6 190	6 520
D' Min. dumping height	2 490	2 070	1 610
E Min. swing radius	2 350	2 400	2 620
F Max. vertical wall digging depth	4 450	4 750	5 220

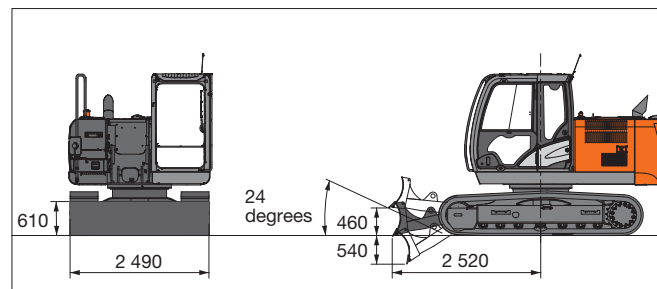
Excluding track shoe lug

DIMENSIONS



BLADE (OPTIONAL)

Unit: mm



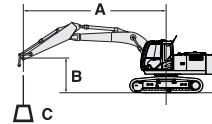
Unit: mm

	ZAXIS 130	ZAXIS 130 with blade (optional)
A Distance between tumblers		2 880
B Undercarriage length		3 580
* C Counterweight clearance		840
D Rear-end swing radius		2 190
D' Rear-end length		2 190
E Overall width of upperstructure		2 460
F Overall height of cab		2 790
F' Over height of upperstructure		2 790
* G Min. ground clearance		410
H Track gauge		1 990
I Track shoe width		G 500
J Undercarriage width		2 490
K Overall width		2 490
* L Track height with triple grouser shoes		780
M Overall length		
Arm with 2.10 m	7 700	8 030
Arm with 2.52 m	7 700	8 030
** Arm with 3.01 m	7 710	8 040
N Overall height of boom		
Arm with 2.10 m		2 630
Arm with 2.52 m		2 750
** Arm with 3.01 m		2 740

* Excluding track shoe lug G: Triple grouser shoe
 ** For transport pin position

LIFTING CAPACITIES

- Notes: 1. Ratings are based on ISO 10567.
 2. Lifting capacity does not exceed 75% of tipping load with the machine on firm, level ground or 87% full hydraulic capacity.
 3. The load point is the center-line of the bucket pivot mounting pin on the arm.
 4. *Indicates load limited by hydraulic capacity.
 5. 0 m = Ground.



A: Load radius
 B: Load point height
 C: Lifting capacity

For lifting capacities, subtract bucket and quick hitch weight from lifting capacities without bucket.

ZAXIS 130

Rating over-front Rating over-side or 360 degrees Unit : kg

Conditions	Load point height m	Load radius										At max. reach		
		1.5 m		3.0 m		4.5 m		6.0 m		7.5 m				meter
Boom 4.60 m	4.5					*3 990	3 870					*2 790	2 480	5.96
Arm 2.10 m	3.0			*6 780	*6 780	*4 750	3 690	3 420	2 410			*2 760	2 120	6.52
Counterweight	1.5					5 110	3 490	3 330	2 330			2 830	1 990	6.71
3 000 kg	0 (Ground)			*5 620	*5 620	4 960	3 350	3 270	2 270			2 900	2 030	6.54
Shoe 500 mm	-1.5	*4 890	*4 890	*8 890	6 050	4 920	3 310	3 270	2 270			3 270	2 270	6.00
	-3.0			*7 280	6 180	*4 940	3 390					*4 220	2 990	4.95
Boom 4.60 m	4.5					*3 590	*3 590	*3 360	2 480			*2 320	2 250	6.36
Arm 2.52 m	3.0			*5 930	*5 930	*4 390	3 730	3 430	2 420			*2 310	1 940	6.90
Counterweight	1.5			*8 090	6 300	5 140	3 500	3 330	2 330			*2 440	1 830	7.07
3 000 kg	0 (Ground)			*6 520	6 010	4 950	3 340	3 250	2 250			2 660	1 850	6.92
Shoe 500 mm	-1.5	*4 660	*4 660	*9 190	5 970	4 880	3 270	3 220	2 220			2 950	2 050	6.40
	-3.0	*8 560	*8 560	*7 890	6 070	4 930	3 310					3 750	2 580	5.44
Boom 4.60 m	6.0											*2 140	2 140	5.97
Arm 3.01 m	4.5					*3 110	*3 110	*3 160	2 510			*2 000	1 990	6.88
Counterweight	3.0			*4 920	*4 920	*3 930	3 780	3 450	2 430			*1 990	1 740	7.38
3 000 kg	1.5			*7 740	6 440	*4 990	3 530	3 330	2 330	*2 260	*1 660	*2 090	1 650	7.54
Shoe 500 mm	0 (Ground)			*7 120	6 000	4 950	3 320	3 230	2 230			*2 300	1 660	7.39
	-1.5	*4 120	*4 120	*8 910	5 890	4 840	3 230	3 170	2 180			2 610	1 800	6.92
	-3.0	*7 180	*7 180	*8 440	5 940	4 840	3 230	3 200	2 210			3 180	2 190	6.04
	-4.5			*6 120	*6 120	*3 780	3 380					*3 770	3 380	4.50

ZAXIS 130 BLADE (ABOVE GROUND)

Rating over-front Rating over-side or 360 degrees Unit : kg

Conditions	Load point height m	Load radius										At max. reach		
		1.5 m		3.0 m		4.5 m		6.0 m		7.5 m				meter
Boom 4.60 m	4.5					*3 990	*3 990					*2 790	2 710	5.96
Arm 2.10 m	3.0			*6 780	*6 780	*4 750	4 020	3 370	2 640			*2 760	2 320	6.52
Counterweight	1.5					5 050	3 810	3 290	2 560			2 790	2 180	6.71
3 000 kg	0 (Ground)			*5 620	*5 620	4 900	3 670	3 220	2 500			2 860	2 230	6.54
Shoe 500 mm	-1.5	*4 890	*4 890	*8 890	6 620	4 860	3 640	3 220	2 500			3 220	2 500	6.00
	-3.0			*7 280	6 750	4 940	3 710					*4 220	3 280	4.95
Boom 4.60 m	4.5					*3 590	*3 590	*3 360	2 710			*2 320	*2 320	6.36
Arm 2.52 m	3.0			*5 930	*5 930	*4 390	4 050	3 390	2 650			*2 310	2 130	6.90
Counterweight	1.5			*8 090	6 870	5 070	3 820	3 290	2 550			*2 440	2 010	7.07
3 000 kg	0 (Ground)			*6 520	*6 520	4 890	3 660	3 200	2 480			2 620	2 040	6.92
Shoe 500 mm	-1.5	*4 660	*4 660	*9 190	6 540	4 820	3 600	3 170	2 450			2 910	2 250	6.40
	-3.0	*8 560	*8 560	*7 890	6 640	4 860	3 630					3 700	2 840	5.44
Boom 4.60 m	6.0											*2 140	*2 140	5.97
Arm 3.01 m	4.5					*3 110	*3 110	*3 160	2 740			*2 000	*2 000	6.88
Counterweight	3.0			*4 920	*4 920	*3 930	*3 930	3 410	2 660			*1 990	1 920	7.38
3 000 kg	1.5			*7 740	7 010	*4 990	3 850	3 290	2 550	*2 260	1 830	*2 090	1 820	7.54
Shoe 500 mm	0 (Ground)			*7 120	6 570	4 880	3 650	3 180	2 450			*2 300	1 830	7.39
	-1.5	*4 120	*4 120	*8 910	6 460	4 770	3 550	3 130	2 400			2 570	1 990	6.92
	-3.0	*7 180	*7 180	*8 440	6 510	4 780	3 550	3 160	2 430			3 130	2 410	6.04
	-4.5			*6 120	*6 120	*3 780	3 710					*3 770	3 700	4.50

ZAXIS 130 BLADE (ON GROUND)

Rating over-front Rating over-side or 360 degrees Unit : kg

Conditions	Load point height m	Load radius										At max. reach		
		1.5 m		3.0 m		4.5 m		6.0 m		7.5 m				meter
Boom 4.60 m	4.5					*3 990	*3 990					*2 790	2 710	5.96
Arm 2.10 m	3.0			*6 780	*6 780	*4 750	4 020	*4 030	2 640			*2 760	2 320	6.52
Counterweight	1.5					*5 660	3 810	*4 370	2 560			*2 900	2 180	6.71
3 000 kg	0 (Ground)			*5 620	*5 620	*6 170	3 670	*4 560	2 500			*3 260	2 230	6.54
Shoe 500 mm	-1.5	*4 890	*4 890	*8 890	6 620	*6 040	3 640	*4 030	2 500			*4 020	2 500	6.00
	-3.0			*7 280	6 750	*4 940	3 710					*4 220	3 280	4.95
Boom 4.60 m	4.5					*3 590	*3 590	*3 360	2 710			*2 320	*2 320	6.36
Arm 2.52 m	3.0			*5 930	*5 930	*4 390	4 050	*3 790	2 650			*2 310	2 130	6.90
Counterweight	1.5			*8 090	6 870	*5 380	3 820	*4 190	2 550			*2 440	2 010	7.07
3 000 kg	0 (Ground)			*6 520	*6 520	*6 040	3 660	*4 490	2 480			*2 730	2 040	6.92
Shoe 500 mm	-1.5	*4 660	*4 660	*9 190	6 540	*6 110	3 600	*4 420	2 450			*3 320	2 250	6.40
	-3.0	*8 560	*8 560	*7 890	6 640	*5 360	3 630					*4 100	2 840	5.44
Boom 4.60 m	6.0											*2 140	*2 140	5.97
Arm 3.01 m	4.5					*3 110	*3 110	*3 160	2 740			*2 000	*2 000	6.88
Counterweight	3.0			*4 920	*4 920	*3 930	*3 930	*3 480	2 660			*1 990	1 920	7.38
3 000 kg	1.5			*7 740	7 010	*4 990	3 850	*3 950	2 550	*2 260	1 830	*2 090	1 820	7.54
Shoe 500 mm	0 (Ground)			*7 120	6 570	*5 820	3 650	*4 350	2 450			*2 300	1 830	7.39
	-1.5	*4 120	*4 120	*8 910	6 460	*6 100	3 550	*4 450	2 400			*2 730	1 990	6.92
	-3.0	*7 180	*7 180	*8 440	6 510	*5 660	3 550	*3 870	2 430			*3 650	2 410	6.04
	-4.5			*6 120	*6 120	*3 780	3 710					*3 770	3 700	4.50

EQUIPMENT

● : Standard equipment

○ : Optional equipment

ENGINE

Air cleaner double filters	●
Alternator 50 A	●
Auto idle system	●
Auto shut-down control	●
Cartridge-type engine oil filter	●
Cartridge-type fuel main filter	●
Cartridge-type fuel pre-filter	●
Dust-proof indoor net	●
Dry-type air filter with evacuator valve (with air filter restriction indicator)	●
ECO/PWR mode control	●
Electrical fuel feed pump	●
Engine oil drain coupler	●
Engine warm-up device	●
Fan guard	●
Fuel cooler	●
High performance water separator	●
Isolation-mounted engine	●
Maintenance free pre-cleaner	●
Muffler filter	●
Radiator, oil cooler and intercooler	●
Radiator reserve tank	●

HYDRAULIC SYSTEM

Auto power lift	●
Control valve with main relief valve	●
Extra port for control valve	●
Full-flow filter	●
High mesh full flow filter with restriction indicator	○
Hose rupture valve for arm	●
Hose rupture valve for boom	●
Pilot filter	●
Power boost	●
Suction filter	●
Variable relief valve for breaker & crusher	●
Work mode selector	●

CAB

All-weather sound suppressed steel cab	●
AM-FM radio	●
Ashtray	●
Auto control air conditioner	●
Auxiliary function lever (breaker or assist)	○
AUX. terminal and storage	●
Cigarette lighter 24 V	●
CRES V (center pillar reinforced structure) cab	●
Drink holder with hot & cool function	●
Electric double horn	●
Engine shut-off switch	●
Equipped with reinforced, tinted (green color) glass windows	●
Evacuation hammer	●
Floor mat	●
Footrest	●
Front guard (lower mesh type)	○
Front guard (upper mesh type)	○
Front window washer	●
Glove compartment	●
Hot & cool box	●
Intermittent windshield wipers	●
Key cylinder light	●
Laminated round glass window	●
LED room light with door courtesy	●
Mesh guard (cab top)	○
OPG front guard Level II (ISO10262) compliant cab	○
OPG top guard Level II (ISO10262) compliant cab	○
Pilot control shut-off lever	●
Power outlet 12 V	●
Rear tray	●
Retractable seat belt	●
ROPS (ISO12117-2) compliant cab	●
Rubber radio antenna	●
Seat : air suspension seat with heater	●
Seat adjustment part : backrest, armrest, height and angle, slide forward / back	●
Short wrist control levers	●
Sun visor (front window/side window)	○
Transparent roof with slide curtain	●
Windows on front, upper, lower and left side can be opened	●
2 speakers	●
4 fluid-filled elastic mounts	●

MONITOR SYSTEM

Alarm buzzers: overheat, engine oil pressure, overload	●
Alarms: overheat, engine warning, engine oil pressure, alternator, minimum fuel level, hydraulic filter restriction, air filter restriction, work mode, overload, etc	●
Display of meters: water temperature, hour, fuel rate, clock	●
Other displays: work mode, auto-idle, glow, rearview monitor, operating conditions, etc	●
32 languages selection	●

LIGHTS

Additional boom light with cover	○
Additional cab roof front 2 lights	●
Additional cab roof rear 1 light	●
2 working lights	●

UPPER STRUCTURE

Batteries 2 x 58 Ah	●
Counterweight 3 000 kg	●
Electric fuel refilling pump with auto stop and filter	○
Fuel level float	●
Hydraulic oil level gauge	●
Rear view camera	●
Rear view mirror (right & left side)	●
Swing parking brake	●
Tool box	●
Undercover	●
Undercover 6.0 mm reinforced	○

UNDERCARRIAGE

Blade	○
Bolt-on sprocket	●
Reinforced track links with pin seals	●
Shoe : 500 mm triple grouser	●
Travel motor covers	●
Travel parking brake	●
Track undercover	●
Upper and lower rollers	●
1 track guard (each side) and hydraulic track adjuster	●
2 track guards (each side) and hydraulic track adjuster	○
4 tie down brackets	●

FRONT ATTACHMENTS

Arm (lower reinforced)	●
Casted bucket link A	●
Centralized lubrication system	●
Dirt seal on all bucket pins	●
Flanged pin	●
HN bushing	●
Reinforced link B	○
Reinforced resin thrust plate	●
WC (tungsten-carbide) thermal spraying	●

ATTACHMENTS

Accessories for 2 speed selector	○
Additional pump (30 L/min)	○
Assist piping	○
Attachment basic piping	●
Breaker and crusher piping	●
Pilot accumulator	●

MISCELLANEOUS

Battery disconnect switch	●
Global e-Service	●
Level indicator	●
Lockable fuel refilling cap	●
Lockable machine covers	●
Onboard information controller	●
Satellite communication system unit	●
Skid-resistant, plates and handrails	●
Standard tool kit	●
Swing alarm	○
Travel alarm	●
Travel direction mark on track frame	●